

Swapping a Non-Printing xCeed for Elo Backpack

This document walks through the steps to take if a non-printing xCeed station is down and needs to be swapped for a new Elo Backpack.

1. Unplug the old xCeed device (ensure this device does NOT have a printer attached).
2. Remove the xCeed power adapter, as it is not compatible with the Elo Backpack, and install an HDMI-capable monitor, if needed.
3. Check ControlPoint. The unplugged device should now show as offline.

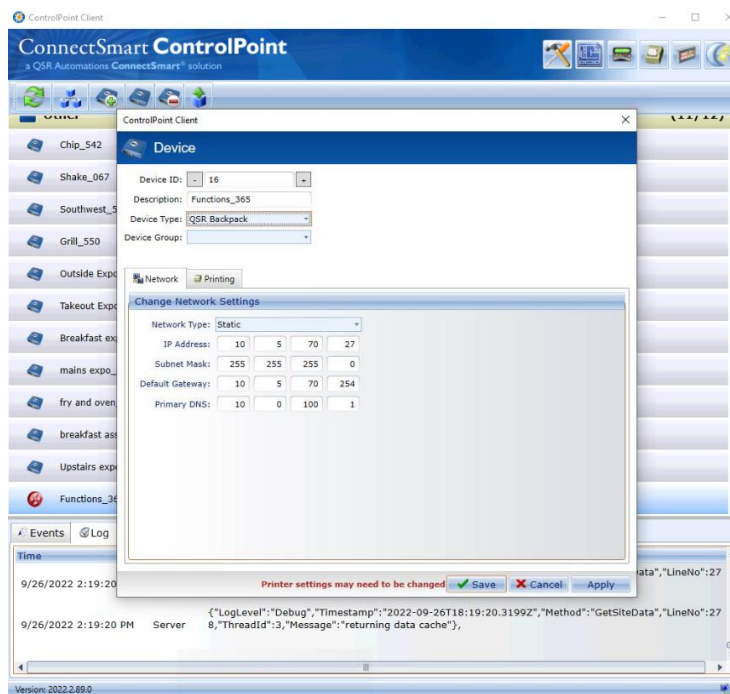


4. Use the **Edit** device icon to modify the offline device and to remove any peripherals connected to the old xCeed device.



5. Change the Device Type to **QSR Backpack**.

Note: A red message appears at the bottom of the device screen stating that printer settings may need to be changed.

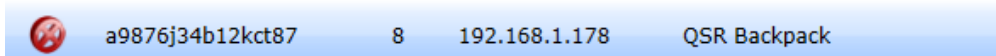


Swapping a Non-Printing xCeed for Elo Backpack

6. Only two tabs will be shown: Network and Printing. Set the Network type to **Static** and configure the IP address.
7. Ensure Receipt Printer is set to **None** as this new device doesn't have printing capabilities.
8. Select **Save**.
9. Plug in the new Elo Backpack device using the supplied power adapter in the box.

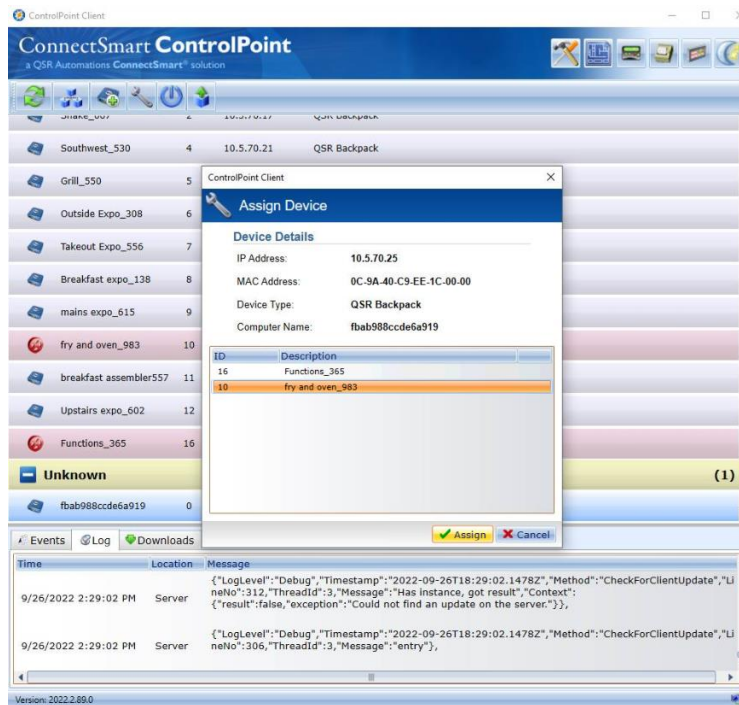
Note: An HDMI cord will be needed to connect the device to the monitor.

10. Power on the device. The device should appear as unknown. A long name will be listed: this is the device android ID and will update once the device is assigned.



Note: If the device is listed as an Elo device, rather than a QSR Backpack, once it is powered on, contact support at support@gsrautomations.com.

11. Select the **unknown device** and click the **wrench icon**.



12. Assign the device to the **QSR Backpack** device.



Swapping a Non-Printing xCeed for Elo Backpack

13. The device will reboot.

Note: The reboot process may take up to 2 minutes to complete.

If further information is needed on adding an Elo backpack device to ControlPoint, please contact support at support@qsrautomations.com.